

■ EL-ED-LED

■ LED Elevated Runway End Light

Compliance with Standards

CAAC:AC-137-CA-2015-01 & 03
 SAC: GB/T 7256
 ICAO: Annex 14, Volume I
 IEC: TS 61827
 FAA: AC 150/5345-46 & EB NO.67
 NATO: STANAG 3316

Application/Use

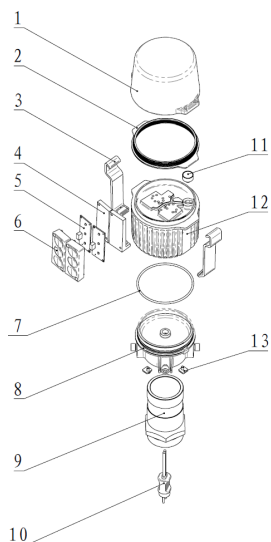
Runway end light

Features

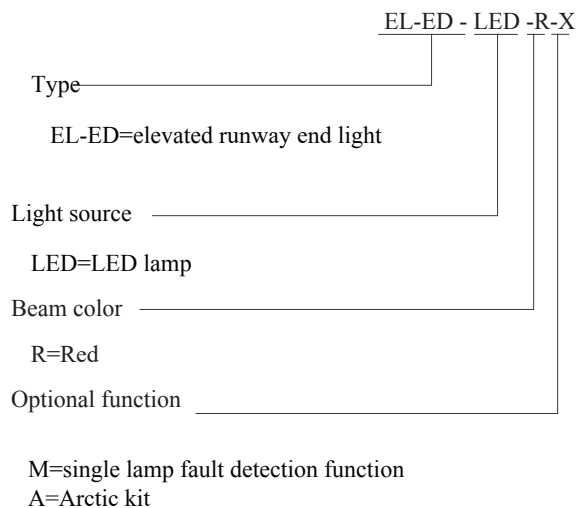
- LED rated 100,000 hours, effective energy saving, maintenance-free, which brings enormous economic benefits to customer
- Excellent optical design to ensure full lighting spot when the glass is partially obscured
- Strict LED color management to ensure premium color consistency
- Consistent dimming curve with halogen lamp fixture, complying with FAA standards
- Proprietary driving circuit and thermal management solution, which greatly improves the reliability and service life of light fixture
- Power factor above 0.95, which minimizes the power network
- interference Optional function of single lamp failure detection, which enables the light to be open as halogen lamp once LED fails
- Compact structure and attractive appearance, with small windward area and strong wind resistance capability
- The main body is made of aluminum alloy with anti-corrosion surface treatment, all fasteners are made of stainless steel, suitable for various harsh environment applications
- High-precision parts and components machining to ensure all dimensional quality and accuracy
- Forged frangible device with precise machining, complying with FAA standards, ensuring good stability and reliability
- IP65-grade ingress protection of the fixture, keep interior from dust The fixture can be connected with one or two-inch extension pole, convenient installation, firmness and reliability
- The calibrator can be directly mounted to the body with convenient and precise installation and calibration
- Interchangeable, modular-designed components, applicable for all kinds of elevated unidirectional lights(LED type), which effectively cuts down the inventories.

Structure

1. Lamp shade
2. Light body gasket
3. Hasp
4. Lamp holder
5. LED lamp assy
6. Lens
7. Lighting fixture gasket
8. Light body support
9. Frangible coupling
10. A6 plug
11. Horizontal level
12. Light body assy (with driver)
13. Square washer



Ordering Information



* Please provide detailed installation info while ordering, spare parts and accessories should be separately ordered with specific order no.

Installation

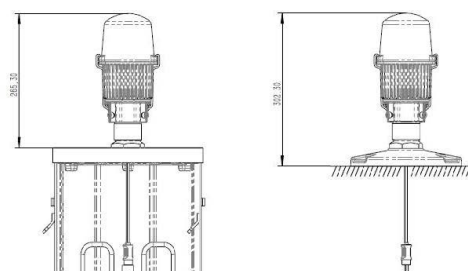


Fig 1. On 12" deep base.

Fig 2. On flange

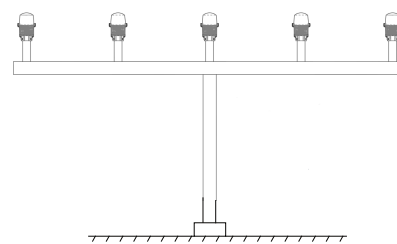
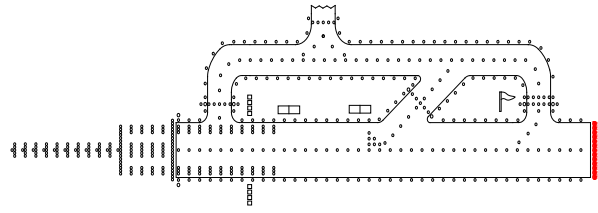


Fig 3. On approach mast.

* Please find detailed information in installation manual

■ EL-ED-LED

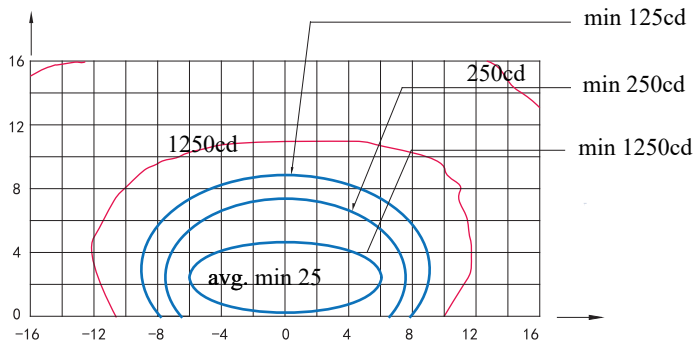
■ LED Elevated Runway End Light



Specifications

Light source: 3 Red LED particles
 Power: 11VA (23VA when arctic kit is on)
 Power factor: ≥ 0.95
 IP grade: IP65

Photometric Data



EL-ED-LED (Red), ICAO Figure A2-8, FAA L-862E

Application		Main Beam		Color	Required min avg. cd	Actual avg. cd
		H	V			
EL-ED-LED	ICAO Figure A2-8/ FAA L-862E	$\pm 6^\circ$	0.25°—4.75°/ 0.2°—4.7°	Red	2500	3626

Spare Parts

Struc No.	Part Name	Order No.	Description
1	Lamp shade	34105	Lamp shade $\Phi 115$
2	Light body gasket	4110A	Gasket $\Phi 113$
5	LED lamp assy	7927K-ED-R	LED 65x27-runway end red
6	Lens	3116L	Lens 69x30
7	Lighting fixture gasket	4112F	O-ring gasket
9	Frangible coupling	24241	2" FC
10	Plug	70602-M12	A6 plug
11	Horizontal level	485BK	Horizontal level $\Phi 18 \times M10$
12	Light body assy	924U11-I	w/o FOD
		924U11-I-A	Arctic, w/o FOD
		924U11-MF	Fuse type FOD
		924U11-MF-A	Fuse FOD, arctic

Accessories

	Description	Order No.
1	Flange (10 inches)	FL-10
2	Flange (12 inches) G2 Screw	FL-12-X-G2
3	Frangible Coupling (2 inches)	FC-02
4	Isolation Transformer (45 W)	ITF-045-066
5	Secondary Calbe connector style 7	REC 7
6	Isolation Transformer Box	TJB-12

Packing Data

4*elevated light / carton Size: 360×380×350 mm³
 Unit net weight: 2.1 kg Gross weight: 9.0 kg