



## Compliance with Standards

CAAC: AC-137-CA-2015-03  
 SAC: GB/T 7256  
 ICAO: Annex 14, Volume 1  
 IEC: TS 61827  
 FAA: AC 150/5345-46  
 NATO: STANAG 3316

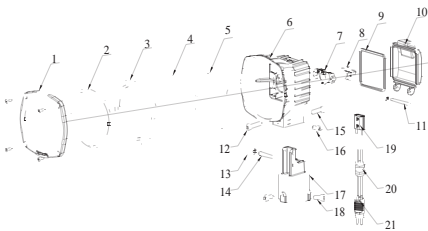
## Application/Use

Runway Threshold light

## Features

- Proprietary optical design to ensure full lighting spot when the glass is partially obscured
- Filter with improved coating process, featuring good transmittance, high bonding and excellent thermo stability
- International standard PK30D pre-focus bulb with accurate positioning and premium light distribution precision
- Self-alignment optical component without need of recalibration when replacing bulb as well as optical components
- Proprietary reflector design, cold light cup processing, temperature variations will not cause any cracks in the glass and filter
- Compact structure and attractive appearance, with small windward area and strong ability against the gales
- The main body is made of aluminum alloy with anti-corrosion surface, all fasteners are made of stainless steel, suitable for harsh environment application
- High-precision parts machining to ensure all dimensional quality and precision
- Forged frangible device with precise machining, complying with FAA standards, ensuring good stability and reliability
- IP65-grade ingress protection of the fixture, keep interior from dust
- The fixture can be connected to both one or two-inch extension pole, which ensures convenient and secure installation
- The calibrator can be installed directly on the body with high precision
- Tool free maintenance, easier to disassemble, and to replace the bulb
- Interchangeable, modular-designed components, applicable for all kinds of elevated unidirectional lights(halogen type), which effectively cuts down the inventories.

## Structure



- |                         |                           |                          |
|-------------------------|---------------------------|--------------------------|
| 1. front cover          | 8. lamp                   | 15. rear adjusting screw |
| 2. optical cover        | 9. light body gasket      | 16. side locking screw   |
| 3. optical cover gasket | 10. rear cover            | 17. body base            |
| 4. filter               | 11. hinge pin             | 18. set screw            |
| 5. reflector            | 12. front adjusting screw | 19. lamp socket          |
| 6. light body           | 13. washer                | 20. waterproof gland     |
| 7. lamp holder          | 14. hinge pin             | 21. plug                 |

## Ordering Information

**EUL-TH-150-G**

Type \_\_\_\_\_  
 EUL-SR=Elevated Runway Threshold Light  
 Power \_\_\_\_\_  
 150=1×150W  
 Beam Color \_\_\_\_\_  
 G=Green

\* Please provide detailed installation info while ordering, spare parts and accessories should be separately ordered with specific order no.

## Installation

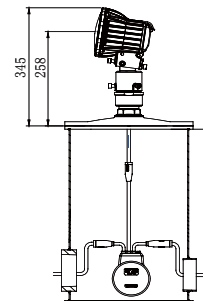


Fig 1. On 12" deep base

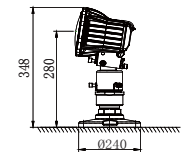
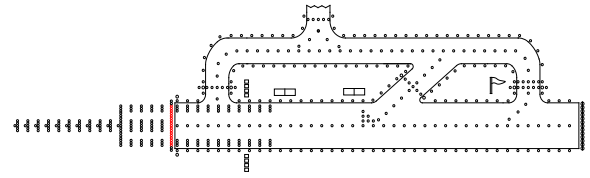


Fig 2. Flange direct mount

\* Please find detailed information in installation manual.

## EUL-TH

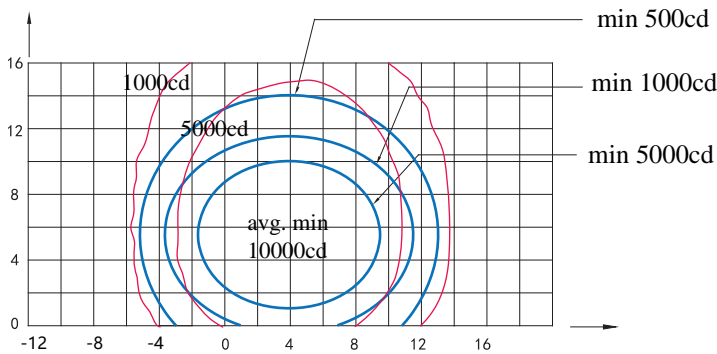
## Elevated Runway Threshold Light



### Light source

Lamp: One 150W /6.6A Pk30d Prefocus halogen lamp.

### Photometric Data



EUL-TH (Green), ICAO Figure A2-3

### Spare Parts

Struc No.	Part Name	Order No.	Description
2	Optical cover	31108	Front Glass JJD
3	Optical Cover Gasket	41110	Front Cover sealing components Rubber strip
4	Filter	31317-G	Filter(Coating Film) 115-Green
4	Reflector	31109	Front Glass JJD
6	Lamp Holder	945518	Elevated light Lamp Holder Lamp Holder assy for PK30D
7	Lamp	L64361	Prefocused halogen lamp 150W 6.6A
8	Lamp Body Gasket	41111	Back Cover Sealing Gasket
18	Lamp Socket	41221	Lamp Socket
19	Waterproof Gland	48404	Metal Waterproof Gland MG18×1.5
20	Style 6 Plug	HT70603	Secondary Cable Connector-A6 Double core plug(Flat Type)-High Temperature resistance
	Hinge	945519	Back Cover Hinge (Assy)

Application		Main Beam		Color	Required min avg. cd	Actual avg. cd
		H	V			
EUL-TH	ICAO Figure A2-3	±5.5° (Toe-in 3.5°)	1°—10°	Green	10000	12221

### Packing Data

1 elevated light                      Size: 220×220×265 mm<sup>3</sup>

Unit net weight:1.91 kg      Gross weight: 2.33 kg

### Accessories

	Description	Order No.
1	Flange (10 inches)	FL-10
2	Flange (12 inches) G2 Screw	FL-12-X-G2
3	Frangible Coupling (2 inches)	FC-02
4	Isolation Transformer (150 W)	ITF-150-066
5	Secondary Calbe connector style 7	REC 7
6	Corrector	954211
7	Isolation Transformer Box	TJB-12