

## EUL-TH-LED

## LED Elevated Runway Threshold Light



### Compliance with Standards

CAAC:AC-137-CA-2015-01 & 03  
 SAC: GB/T 7256  
 ICAO: Annex 14, Volume I  
 IEC: TS 61827  
 FAA: AC 150/5345-46 & EB NO.67  
 NATO: STANAG 3316

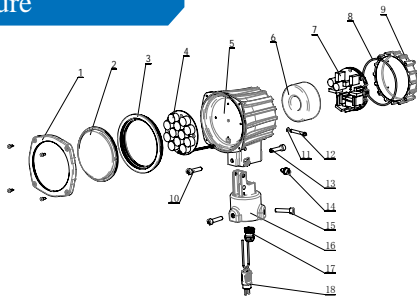
### Application/Use

Runway threshold light

### Features

- The LED light is featured by long working life, energy conversation, maintenance-free, which brings enormous economic benefits to customers
- Proprietary optical design to ensure full lighting spot when the glass is partially obscured
- Strict LED color management to ensure premium color consistency
- Light distribution consistent with that of halogen lights, complying with FAA standards
- Proprietary driver circuit and thermal management solution, which greatly improves the reliability and service life of light fixture
- Power factor above 0.9, which minimizes the power network disturbance
- Optional function of single lamp failure detection, which enables the light to simulate open circuit of halogen lamp
- Compact structure and attractive appearance, with small windward area and strong ability against the gales
- The main body is made of aluminum alloy with anti-corrosion surface, all fasteners are made of stainless steel, suitable for harsh environment application
- High-precision parts and components machining to ensure all dimensional quality and precision
- Forged frangible device with precise machining, complying with FAA standards, ensuring good stability and reliability
- IP65-grade protected from total dust ingress
- The fixture can be connected to both one or two-inch extension pole, which ensures convenient and secure installation.
- The calibrator can be installed directly on the body with high precision
- Interchangeable, modular-designed components, applicable for all kinds of elevated unidirectional lights(LED type), which effectively runs down the inventories.

### Structure



- |                         |                           |                          |
|-------------------------|---------------------------|--------------------------|
| 1. front cover          | 7. driver assy            | 13. rear adjusting screw |
| 2. optical cover        | 8. light body gasket      | 14. side locking screw   |
| 3. optical cover gasket | 9. rear cover             | 15. set screw            |
| 4. LED lamp assy        | 10. front adjusting screw | 16. body base            |
| 5. light body           | 11. washer                | 17. waterproof gland     |
| 6. transformer          | 12. hinge pin             | 18. plug                 |

### Ordering Information

EUL-TH-LED-G-X

Type \_\_\_\_\_  
 EUL-TH=Elevated runway threshold light

Light source \_\_\_\_\_  
 LED=LED lamp

Beam color \_\_\_\_\_  
 G=Green

Optional function \_\_\_\_\_  
 M=single lamp function detection function

\* Please provide detailed installation info while ordering, spare parts and accessories should be separately ordered with specific order no.

### Installation

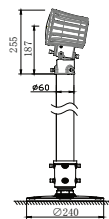


Fig 1. On extension pole.

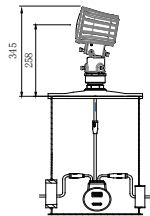


Fig 2. On 12" deep base.

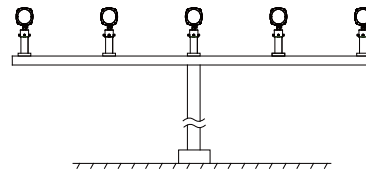


Fig 3. On approach mast.

\* Please find detailed information in installation manual

