



## Compliance with Standards

CAAC:AC-137-CA-2015-01 & 03  
 SAC: GB/T 7256  
 ICAO: Annex 14, Volume I  
 IEC: TS 61827  
 FAA: AC 150/5345-46 & EB NO.67  
 NATO: STANAG 3316

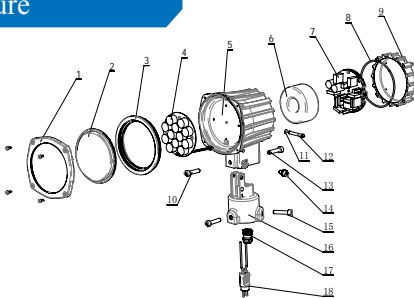
## Application/Use

Approach side-row light

## Features

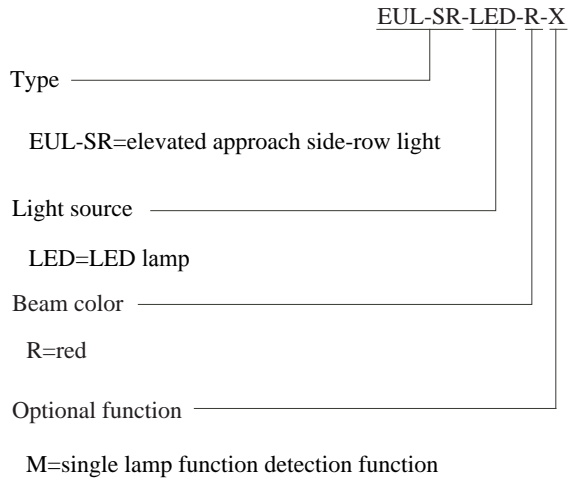
- The LED light is featured by long working life, energy conversation, maintenance-free, which brings enormous economic benefits to customers
- Proprietary optical design to ensure full lighting spot when the glass is partially obscured
- Strict LED color management to ensure premium color consistency
- Light distribution consistent with that of halogen lights, complying with FAA standards
- Proprietary driver circuit and thermal management solution, which greatly improves the reliability and service life of light fixture
- Power factor above 0.9, which minimizes the power network disturbance
- Optional function of single lamp failure detection, which enables the light to simulate open circuit of halogen lamp
- Compact structure and attractive appearance, with small windward area and strong ability against the gales
- The main body is made of aluminum alloy with anti-corrosion surface, all fasteners are made of stainless steel, suitable for harsh environment application
- High-precision parts and components machining to ensure all dimensional quality and precision
- Forged frangible device with precise machining, complying with FAA standards, ensuring good stability and reliability
- IP65-grade protected from total dust ingress
- The fixture can be connected to both one or two-inch extension pole, which ensures convenient and secure installation.
- The calibrator can be installed directly on the body with high precision
- Interchangeable, modular-designed components, applicable for all kinds of elevated unidirectional lights(LED type), which effectively runs down the inventories.

## Structure



- |                         |                           |                          |
|-------------------------|---------------------------|--------------------------|
| 1. front cover          | 7. driver assy            | 13. rear adjusting screw |
| 2. optical cover        | 8. light body gasket      | 14. side locking screw   |
| 3. optical cover gasket | 9. rear cover             | 15. set screw            |
| 4. LED lamp assy        | 10. front adjusting screw | 16. body base            |
| 5. light body           | 11. washer                | 17. waterproof gland     |
| 6. transformer          | 12. hinge pin             | 18. plug                 |

## Order Information



\* Please provide detailed installation info while ordering, spare parts and accessories should be separately ordered with specific order no.

## Installation

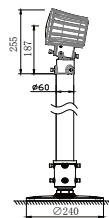


Fig 1. On extension pole.

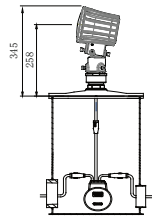


Fig 2. On 12" deep base.

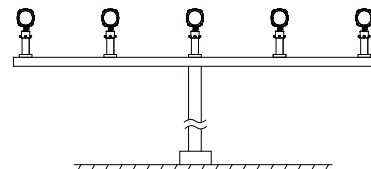
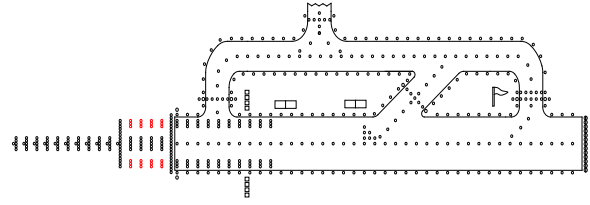


Fig 3. On approach mast.

\* Please find detailed information in installation manual

■ EUL-SR-LED

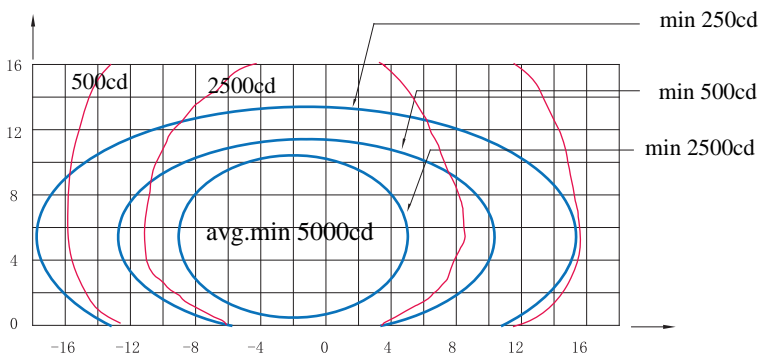
■ LED Elevated Approach Side-row Light



## Specifications

Light source: 12 red LED particles  
 Power: 28VA  
 Power factor:  $\geq 0.90$   
 IP grade: IP65

## Photometric Data



EUL-SR-LED(Red) , ICAO Figure A2-2  
 ( Vertical main beam coverage 0.5°—10.5°)

Application		Main beam		Color	Required min avg. cd	Actual avg. cd
		H	V			
EUL-SR	ICAO Figure A2-2 (Toe- in 2°)	$\pm 7^\circ$	0.5° — 10.5°	Red	5000	6832
		$\pm 7^\circ$	1° — 11°	Red	5000	6995
		$\pm 7^\circ$	1.5° — 11.5°	Red	5000	6877

## Packing Data

1 light                      Size: 220×220×265 mm<sup>3</sup>  
 Unit net weight: 3.5 kg    Gross weight: 4.0 kg

## Spare Parts

Struc No.	Part Name	Order No.	Description
2	Optical cover	31108	Front Glass JJD
3	Optical Cover Gasket	41110	Front Cover sealing components Rubber strip
4	LED Lamp Assy	979242-12-R	LED Lamp 103 (12-O) Red
6	Isolation Transformer	79125	Ring Form Isolation Transformer (35W)
8	Lamp Body Gasket	41154	O-ring 102*3
17	Waterproof Gland	48401	Metal Waterproof Gland MG20×1.5
18	Style 6 Plug	HT70603	Secondary Cable Connector-A6 Double core plug(Flat Type)-High Temperature resistance

## Accessories

	Description	Order No.
1	Flange (10 inches)	FL-10
2	Flange (12 inches) G2 Screw	FL-12-X-G2
3	Frangible Coupling (2 inches)	FC-02
4	Isolation Transformer (45 W)	ITF-045-066
5	Secondary Calbe connector style 7	REC 7
6	Corrector	954211
7	Isolation Transformer Box	TJB-12

\* All rights reserved, subject to modifications