



Compliance with Standards

CAAC: AC-137-CA-2015-03
 SAC: GB/T 7256
 ICAO: Annex 14, Volume 1
 IEC: TS 61827
 FAA: AC 150/5345-46
 NATO: STANAG 3316

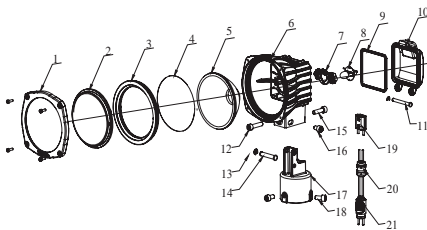
Application/Use

Taxiway stop-bar light

Features

- Proprietary optical design to ensure full lighting spot when the glass is partially obscured
- Filter with improved coating process, featuring good transmittance, high bonding and excellent thermo stability
- International standard PK30D prefocus bulb with accurate positioning and premium light distribution precision
- Self-alignment optical component without need of recalibration when replacing bulb as well as optical components
- Proprietary reflector design, cold light cup processing, temperature variations will not cause any cracks in the glass and filter
- Compact structure and attractive appearance, with small windward area and strong ability against the gales
- The main body is made of aluminum alloy with anti-corrosion surface, all fasteners are made of stainless steel, suitable for harsh environment application
- High-precision parts machining to ensure all dimensional quality and precision
- Forged frangible device with precise machining, complying with FAA standards, ensuring good stability and reliability
- IP65-grade ingress protection of the fixture, keep interior from dust
- The fixture can be connected to both one or two-inch extension pole, which ensures convenient and secure installation
- The calibrator can be installed directly on the body with high precision
- Tool free maintenance, easier to disassemble, and to replace the bulb
- Interchangeable, modular-designed components, applicable for all kinds of elevated unidirectional lights(halogen type), which effectively cuts down the inventories.

Structure



- | | | |
|-------------------------|---------------------------|--------------------------|
| 1. front cover | 8. lamp | 15. rear adjusting screw |
| 2. optical cover | 9. light body gasket | 16. side locking screw |
| 3. optical cover gasket | 10. rear cover | 17. body base |
| 4. filter | 11. hinge pin | 18. set screw |
| 5. reflector | 12. front adjusting screw | 19. lamp socket |
| 6. light body | 13. washer | 20. waterproof gland |
| 7. lamp holder | 14. hinge pin | 21. plug |

Ordering Information

EUL-SB-045-R

Type _____
 EUL-SB=Elevated stop-bar light
 Lamp Power _____
 045 = 1×45W
 Beam Color _____
 R = Red

* Please provide detailed installation info while ordering, spare parts and accessories should be separately ordered with specific order no.

Installation

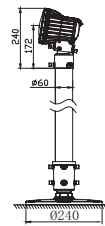


Fig 1. On extension pole.

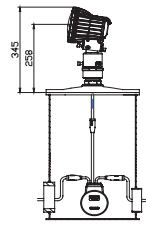


Fig 2. On 12" deep base.

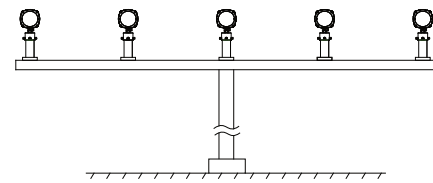
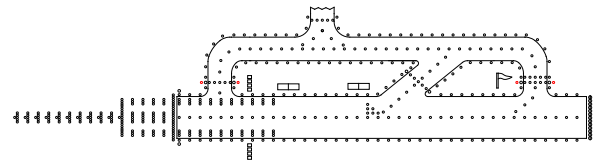


Fig 3. On approach mast.

* Please find detailed information in installation manual.

■ EUL-SB

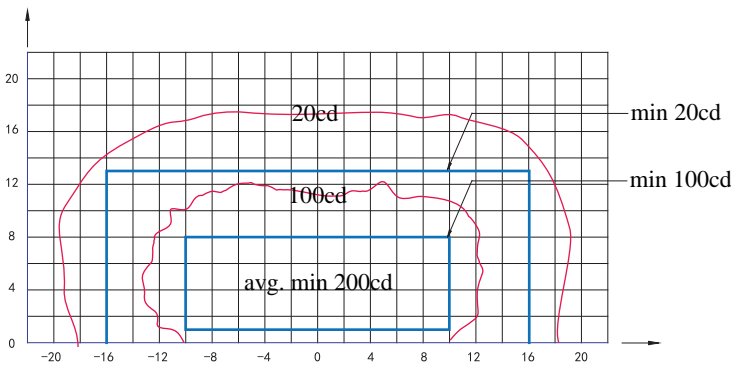
■ Elevated Stop-bar Light



Light source

Lamp: One 45W /6.6A Pk30d prefocus halogen lamp.

Photometric Data



EUL-SB (Red), ICAO Figure A2-12

Application		Main Beam		Color	Required min. cd	Actual min. cd
		H	V			
EUL-SB	ICAO Figure A2-12	±10°	1°—8°	Red	200	294

Spare Parts

Struc No.	Part Name	Order No.	Description
2	Optical cover	31108	Front Glass JJD
3	Optical Cover Gasket	41110	Front Cover sealing components Rubber strip
4	Filter	31317-R	Filter (Coating Film) 115- Red
4	Reflector	31109	Front Glass JJD
6	Lamp Holder	945518	Elevated light Lamp Holder Lamp Holder assy for PK30D
7	Lamp	L64319	Prefocused halogen lamp 45W 6.6A
8	Lamp Body Gasket	41111	Back Cover Sealing Gasket
19	Lamp Socket	41221	Lamp Socket
20	Waterproof Gland	48404	Metal Waterproof Gland MG18×1.5
21	Style 6 Plug	HT70603	Secondary Cable Connector-A6 Double core plug(Flat Type)-High Temperature resistance
	Hinge	945519	Back Cover Hinge (Assy)

Packing Data

1 elevated light Size: 220×220×265 mm³
Unit net weight: 1.91 kg Gross weight: 2.33 kg

Accessories

	Description	Order No.
1	Flange (10 inches)	FL-10
2	Flange (12 inches) G2 Screw	FL-12-X-G2
3	Frangible Coupling (2 inches)	FC-02
4	Isolation Transformer (150 W)	ITF-150-066
5	Secondary Cable connector style 7	REC 7
6	Corrector	954211
7	Isolation Transformer Box	TJB-12